

Thanks to PugManTerror who originally put this page together for everyone in the Aero750 Forum.

Carburetor Needle/Jet replacement for Shadow 750 Aero 2004/05

Before continuing, please read:

I by hosting this page, take no responsibility for any damage resulting from following the pictures on this page. Work on your motorcycle at your own risk, these pictures are only for guidance and were taken when this owner did this to his motorcycle.

Here's how I replaced the needle
and jet from the [DynoJet[®] Kit](#).

Click [Here](#) for a link to the DynoJet[®] Kit 750 Aero installation pamphlet.

You need to remove the SEAT in order to access the carburetor.

You need to remove the TANK in order to access the carburetor.

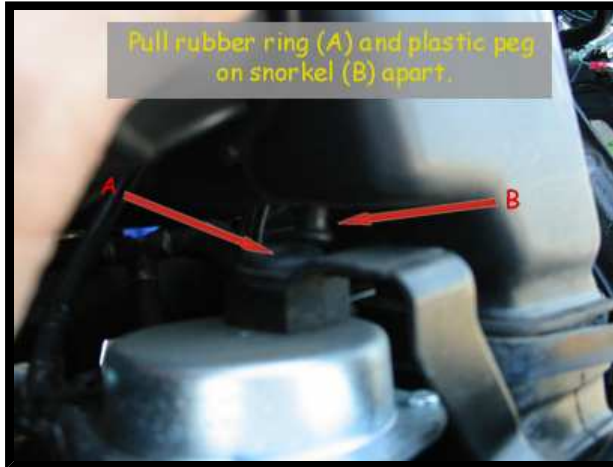
You need to remove the AIR FILTER in order to access the carburetor.

For procedures how to remove AIR FILTER...

follow directions and look below for illustrations.

- Remove the screws attached to the engine mount brackets on either side of the filter housing.
- Remove the five allen screws that hold on the chrome face of the teardrop air filter. (Be careful not to scratch it...wrap it in a towel and put it aside.)
- Next, Remove the air filter.
- Now follow illustrations below.

1.



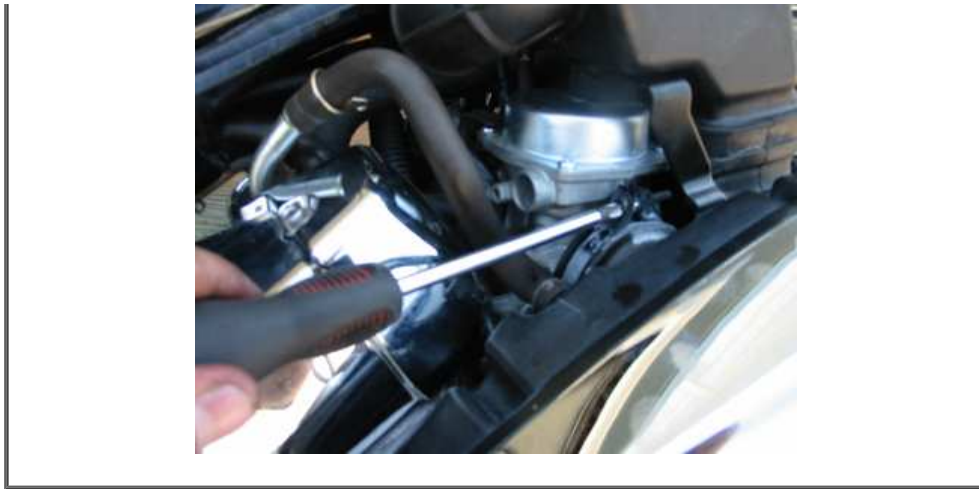
2.



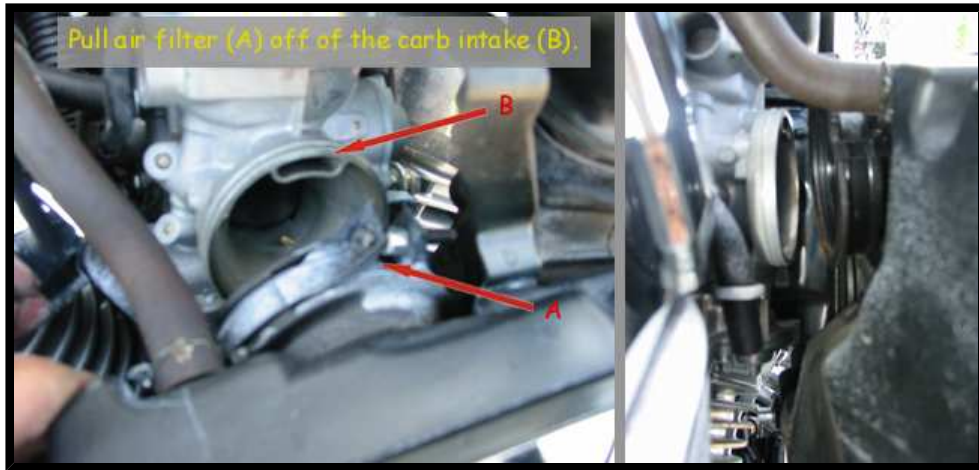
3.



Another view of Step 3.



4.



5.

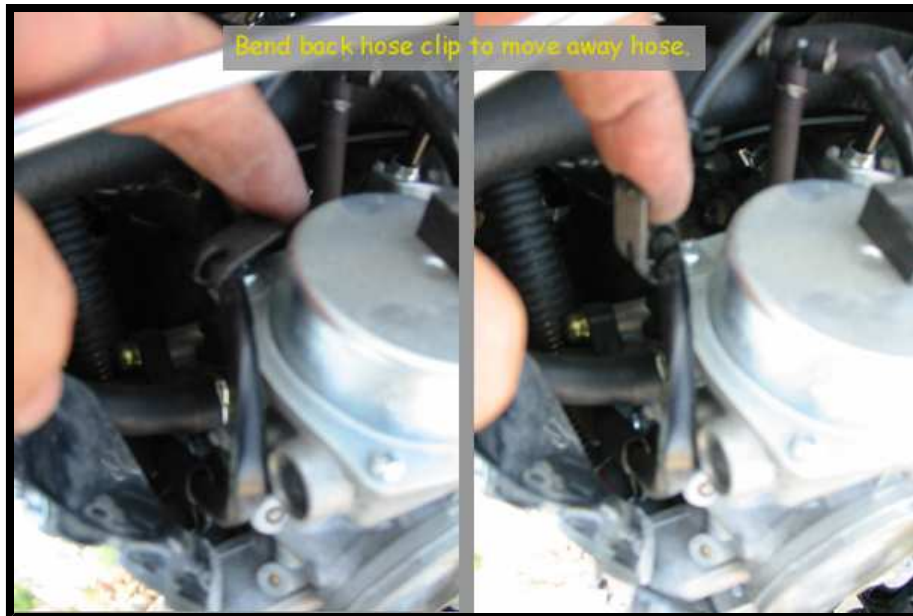


6.



After you remove the air filter, follow these steps.

7.



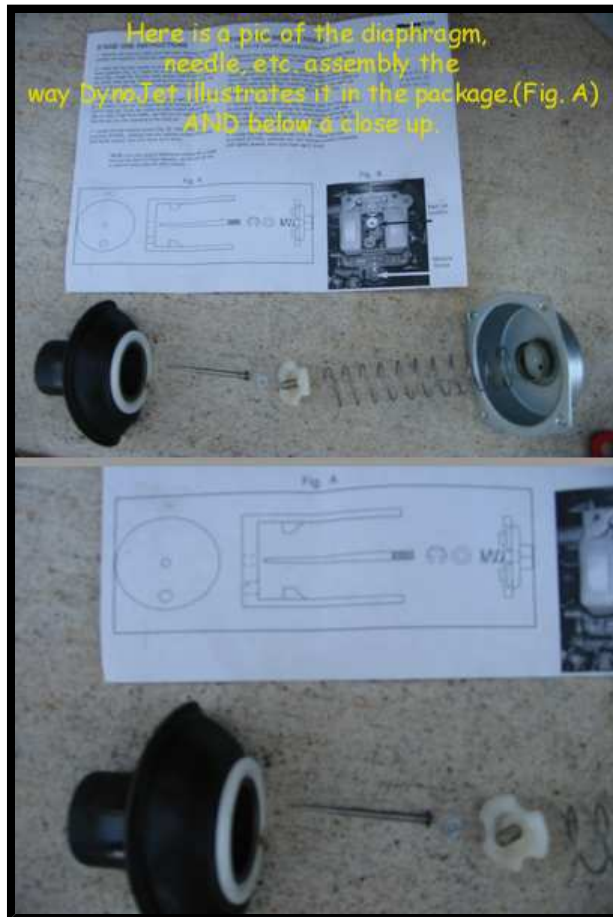


8.

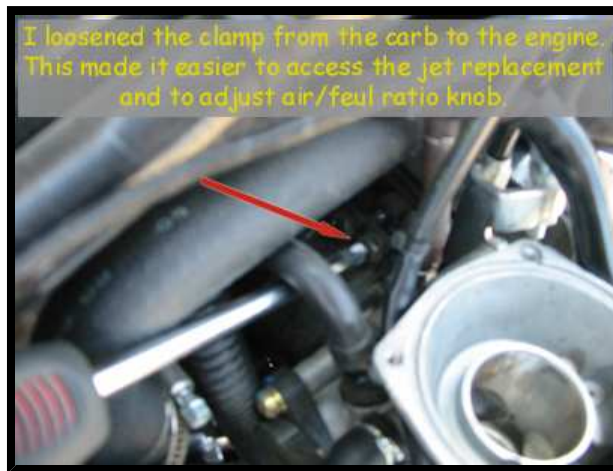
9.



10.



11.

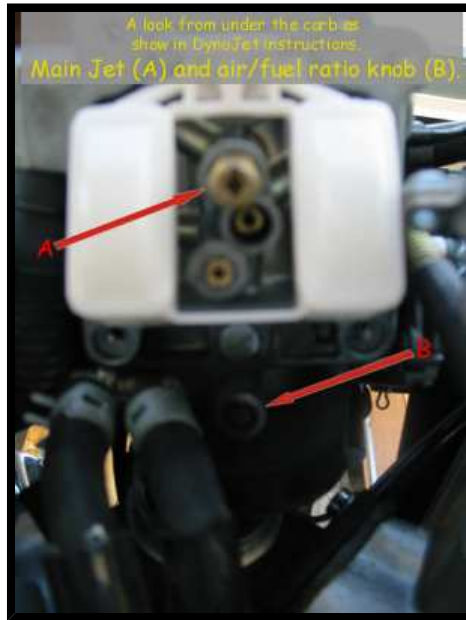
12.**13.**

I was told by a seasoned rider/750 Aero forum participant that there is a small screw under the carb use to drain the gas. I didn't know because I am an amateur. So give it try.

14.



15.





16.

Remove jet (A) and replace with suggested jet. Adjust air/fuel ratio with tool (B) that came with package according to directions.



Remove needle, springs and washers diaphragm by removing white piece that holds it in. This is pretty obvious.

Replace OEM needle with DynoJet needle and reassemble.

17.

18.

